



# Global Programme Inclusion of Persons with Disabilities (GP Inclusion)

## Background

More than 1.3 billion people – over 16% of the world’s population – live with one or more disabilities. Most of these people face limited access to essential areas of life such as education, legal justice, the labour market, financial services, digitalisation and social security systems. These barriers often prevent them from fully and actively participating in society. As a result, persons with disabilities are disproportionately affected by poverty. These inequalities are exacerbated by the increase in conflicts and natural disasters around the world.

At the same time, those living in poverty are at a higher risk of acquiring a disability. Precarious living and working conditions, as well as inadequate healthcare, lead to accidents, chronic diseases and thus to more disabilities. Women and girls, children, LGBTQI+ and other marginalised groups with disabilities are often excluded from access to rights and resources and experience multiple forms of discrimination. Women in the Global South are significantly more likely than men to acquire a disability during their lifetime. In addition, women with disabilities are up to ten times more likely to experience violence than women without disabilities.

<b>Programme Name</b>	Global Programme Inclusion of Persons with Disabilities (GP Inclusion)
<b>Sponsor</b>	The German Federal Ministry for Economic Cooperation and Development (BMZ)
<b>Region</b>	Worldwide
<b>Budget</b>	15.5 million euros
<b>Duration</b>	July 2023 – June 2026



**1.3 billion people worldwide have one or multiple disabilities.**

**This is approximately 16% of the world’s population.**



## Objective of the Global Programme

The gender-sensitive inclusion of persons with disabilities is being given greater consideration in both German and international development cooperation.

## Target Group

The Global Programme (GP), commissioned by the German Federal Ministry for Economic Cooperation and Development (BMZ), aims to support and empower persons with disabilities in the Global South. To achieve this, it works closely with national and international partners, providing networking and advisory support, and implementing joint actions to promote inclusion (in politics, business and society). In doing so, disability inclusion is mainstreamed into international cooperation and global partnerships.

## Approach and Services

The needs and expertise of persons with disabilities guide the actions of the Global Programme at all times: Working with Organisations of Persons with Disabilities (OPDs) is key to achieving sustainable inclusion. GP Inclusion also works with governments, civil society and the private sector to develop and share innovative and practical solutions on a global scale. All activities explicitly consider gender equality and address various forms of discrimination from an intersectional perspective. Efforts to transform gender roles and build inclusive societies go hand in hand.

Persons with disabilities include those who have long-term physical, mental, intellectual or sensory impairments which in interaction with various barriers may hinder their full and effective participation in society on an equal basis with others.



Source: United Nations Convention on the Rights of Persons with Disabilities (UN CRPD)



## The Global Programme Consists of Two Components:

### Component 1: Global Disability Summit

In cooperation with the Jordanian Higher Council for the Rights of Persons with Disabilities (HCD) and the International Disability Alliance (IDA), the German Federal Government is co-organising the third **Global Disability Summit** (GDS), which will take place in Berlin in April 2025. The common goal is to strengthen the inclusion of persons with disabilities in development cooperation.

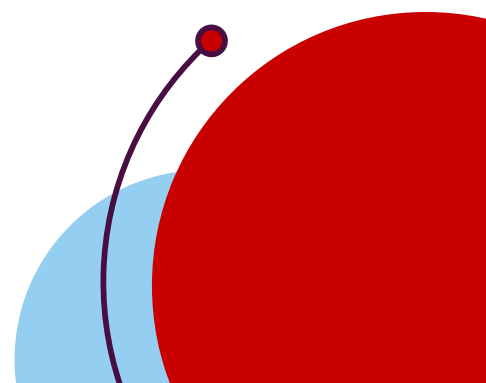
The GP Inclusion provides technical, conceptual and organisational support to the three Summit hosts and advises them on the consultation process with national and international stakeholders and civil society. One key objective of the GDS 2025 is to improve access to data on the inclusion of persons with disabilities, which is why new formats such as the Global Disability Report and the Disability Data Hub will be launched at the Summit. In addition, the Global Programme supports the political negotiation process to secure stronger commitments from various stakeholders, which are essential for the implementation of the UN Convention on the Rights of Persons with Disabilities and for strengthening the rights of persons with disabilities in the Global South. As part of its commitments to the GDS 2025, Germany will also launch a multilateral initiative on disability-inclusive urban reconstruction.

### Component 2: Implementation and Consultancy

To promote inclusion in German and international development cooperation, the Global Programme carries out **awareness-raising activities** and provides **learning**

**resources** and **advisory services** on accessibility, disability inclusion and the empowerment of persons with disabilities. The aim is to inspire and educate, while drawing positive attention to the various aspects of inclusion. In addition, the Global Programme provides practical insights and expert knowledge and actively promotes exchange between implementing agencies. Key tools include events and campaigns, the **Living Inclusion Network** and various information materials.

GP Inclusion also supports **innovative measures for disability inclusion** in different sectors and in the field of data. In doing so, it contributes to portfolio development and increased implementation expertise. One example of this is the partnership with Zero Project Scaling Solutions, which seeks to transfer creative solutions for persons with disabilities to other countries or regions. Moreover, the programme conducts regional and bilateral consultations within German Technical Cooperation (TC) and monitors the inclusion portfolio. Another focus is the development of standardised approaches in the areas of employment promotion and digital inclusion to ensure that the inclusion of persons with disabilities is systematically integrated into the design and implementation of projects and programmes.





## Political Framework

The inclusion of persons with disabilities is a fundamental human right and enshrined in many international and national conventions and laws. Key policy frameworks include:

- The **United Nations Convention on the Rights of Persons with Disabilities** (UN CRPD) stipulates that the rights of persons with disabilities must be respected and their participation in political, social, cultural and economic life must be ensured. Article 32 obliges member states to implement their international cooperation measures in a disability-inclusive manner.
- The United Nations **2030 Agenda** identifies the inclusion of persons with disabilities as a key enabler for sustainable and human rights-compliant development. The overarching principle of “Leave No One Behind” underlines the importance of ensuring the participation of *all* segments of the population. Disability inclusion is therefore relevant to all 17 Sustainable Development Goals.

For persons with disabilities to benefit from development measures, their inclusion must be systematically mainstreamed into all dimensions of development cooperation.

## Links:

- [UN Convention on the Rights of Persons with Disabilities](#)
- [Human Rights Strategy for German Development Policy](#)
- [Third Development Policy Action Plan on Gender Equality \(2023–27\) by BMZ](#)
- [The Living Inclusion Network](#)
- [Publications of the Global Programme Inclusion of Persons with Disabilities](#)
- [Website Global Disability Summit](#)

### Imprint

Published by:  
Deutsche Gesellschaft für  
Internationale Zusammenarbeit (GIZ) GmbH

Registered offices  
Bonn and Eschborn

Global Programme Inclusion of Persons with Disabilities  
Friedrich-Ebert-Allee 36  
53113 Bonn

E [info@giz.de](mailto:info@giz.de)  
I [www.giz.de](http://www.giz.de)

Bonn, 2024

E [disability@giz.de](mailto:disability@giz.de)

Layout:  
weissbunt and EYES-OPEN, Berlin

Photo credits/sources:  
Title: ©GIZ/Tamar Korakhashvili; S.2 ©GIZ, Conor Wall;  
S.3 ©Luqman Mahoro; S.4 ©Fahad Kaizer

URL links:  
Responsibility for the content of external websites linked in this publication always lies with their respective publishers. GIZ expressly dissociates itself from such content.

GIZ is responsible for the content of this publication.